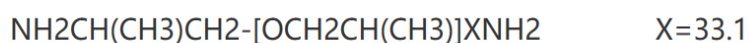




Polyether Amine D-2000

COMPOSITION:

CHENHUA POLYETHER AMINE D Series products is our core products. They are diamine terminated PPGs (polypropylene glycol) with the following representative structure:



TECHNICAL DATA:

CAS	9046-10-0
Appearance	Colorless to pale yellow transparent liquid
Molecular weight Wn	2000
Color (Pt-Co)	25 Max
Amine Value mmol/g	0.95-1.05
Water content %	0.25 Max

APPLICATIONS:

- Curing agent for Epoxy Resin, Adhesive, Wind Power Blade and Cathodic Electrophoretic Paint
- Raw material for Polyurea, Polyurethane and RIM
- Modified Polyether Amine

PACKAGE:

200kg/barrel with nitrogen